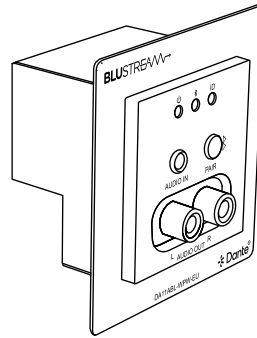


DA11ABL-WPW-EU

Quick Reference Guide



Introduction

The DA11ABL-WPW-EU is a multi-input / output wall plate to convert Bluetooth and analogue audio within a digital Dante® networked audio system. The DA11ABL-WPW-EU converts 2 input channels of Bluetooth or unbalanced audio to Dante® digital audio, and 2 channels of Dante® audio to 2 x output channels of unbalanced audio.

The DA11ABL-WPW-EU is a plug & play device that is powered using PoE (Power over Ethernet), or via 12V power supply, offers support for AES67 RTP audio transport and magnetic faceplate design allows for both UK & EU backbox compatibility. The DA11ABL-WPW-EU is the ideal BYOD interface to allow any Bluetooth device to stream audio wirelessly to a Dante® audio system.

FEATURES:

- Dante® network wall plate interface for Bluetooth and analogue L/R audio inputs, and L/R audio outputs
- Converts 2ch Bluetooth, or un-balanced audio sources to Dante® audio
- Converts 2x Dante® audio channels to un-balanced audio outputs
- Adjustable input sensitivity from +24dBu to -28dBV and output gain from +20dBu to -28 dBV via web GUI or API
- Dante® Audio Supports 44.1, 48, 88.2 & 96 KHz sample rates @ 16, 24 & 32 Bit
- Configurable Dante® device latency (supports 2, 3, 4, 5 or 10ms configurable using Dante® Controller)
- Supports AES67 RTP audio transport
- Features Class 0 IEEE 802.3af PoE for powering of product from any PoE switch
- Supports power via 12V DC adapter (not included) for when network switch does not support PoE
- White magnetic faceplate surround allowing for both UK & EU backbox compatibility
- In-built web-GUI for configuration and control

Bluetooth

Bluetooth 5.0 technology allows for up to 2x simultaneous connections from source audio devices, where the selected devices audio is received and sent into the Dante network.

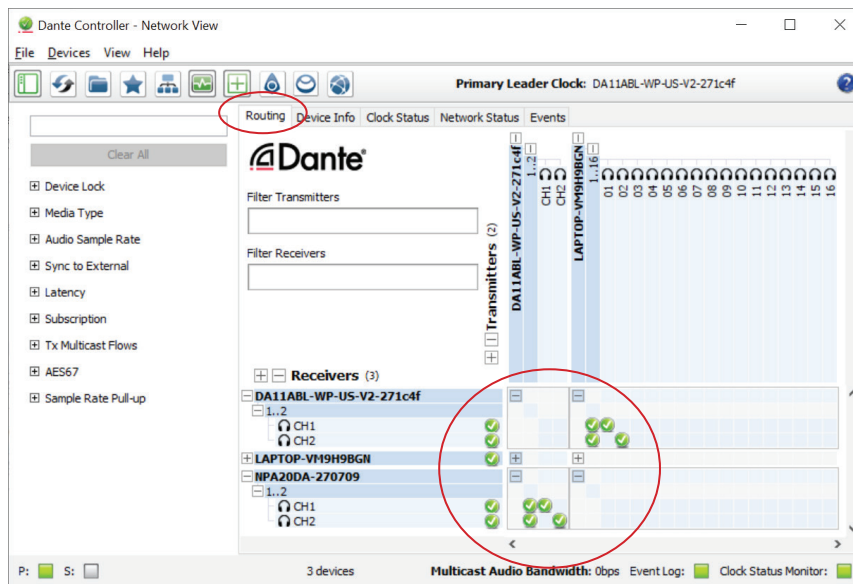
To connect a Bluetooth enabled device to the DA11ABL-WPW-EU, press the Pair button on the unit, go to the Bluetooth settings of the source audio device, and enable Bluetooth connectivity. The DA11ABL-WPW-EU will appear in the list of available devices.

Dante Controller

Dante Controller software is required in order to setup and configure the DA11ABL-WPW-EU as well as control your Dante network. Audinate provide extensive training videos and documentation on their website. This can be found here: <http://www.audinate.com/products/software/dante-controller>

Upon connecting your DA11ABL-WPW-EU to a compatible network, the Dante Controller software should automatically discover the device. The DA11ABL-WPW-EU will appear in the Dante Controller with a name denoted with “DA11ABL-WPW-EU”. On the “Routing” screen you can create audio routing between Dante transmitters and receivers in your system.

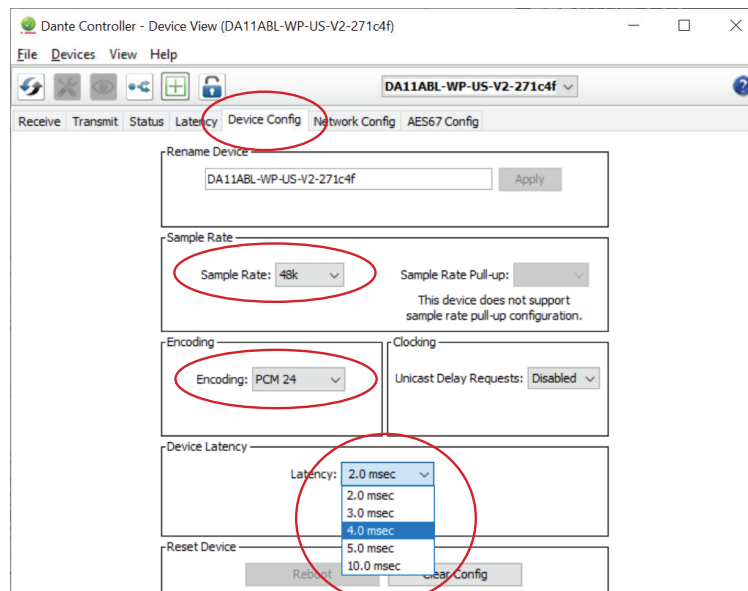
Please ensure your PC is on the same network as your Dante devices. Dante is not able to transmit over WiFi and it is recommended to hardwire into the Dante network. Having multiple network devices enabled can also confuse the Dante Controller software so it is recommended to disable WiFi during configuration.



It is also possible to change the settings of the DA11ABL-WPW-EU under the “Device Info” screen in the Dante Controller software. To do so, select the “Device Config” menu.

Here we can adjust the sample rate and the encoding bit rate of the DA11ABL-WPW-EU. Please note that Dante products can only transmit or receive audio from other Dante products that are set up with the same sample rate. A mismatch in sample rate may stop audio from transmitting.

Under the “Device Config” screen we can also adjust the latency of the DA11ABL-WPW-EU from 2, 3, 4, 5 or 10 milliseconds.



Web Interface Module

The DA11ABL-WPW-EU features an in-built Web GUI which can be used for control and configuration of the device. By default the device is set to DHCP, however if a DHCP server (eg: network router) is not installed the device will receive a link local address in the 169.254.xxx.xxx range. The device info screen of Dante Controller will provide you with the IP address information of each unit.

Device Name	Model Name	Product Version	Dante Version	Device Lock	Primary Address	Primary Link Speed	Secondary Address	Secondary Link Speed
DA11ABL-WP-US-V2-271c4f	DA11ABL-WP-US-V2	1.0.1	1.3.1.1	<input type="checkbox"/>	169.254.64.197	100Mbps	N/A	N/A
LAPTOP-VM9H9BGN	Dante Virtual Soundcard	4.4.1.3	4.4.1.3	<input type="checkbox"/>	169.254.0.222	1Gbps	N/A	N/A
NPA20DA-270709	NPA20DA	1.0.1	1.3.1.1	<input type="checkbox"/>	169.254.84.59	100Mbps	N/A	N/A

By accessing the IP address of the DA11ABL-WPW-EU in your web browser, you will gain access the units web GUI. The following details will allow you to log in to the admin section:

Default **Username** is: `blustream` Default **Password** is: `@BlS1234`

This will give access to change the network settings as required, as well as configure the device.

Settings Page:

Settings

Control
Users
Settings
System
Information
Update Password
Log Out

IP Setting

IP Mode: Static DHCP

IP Address:

Subnet:

TCP Port: Enable

Gateway:

Telnet Port: Enable

Domain Name: .local

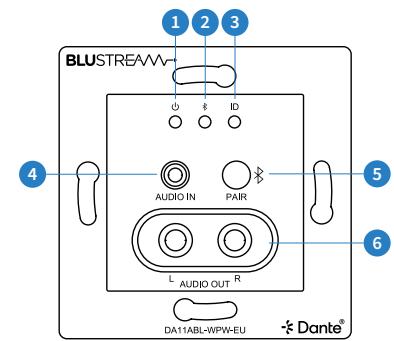
Product Model Setting

Product Model:

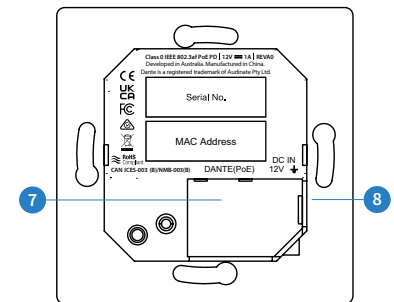
Set Network Defaults
Save

Connections

- 1 Power Status Indicator - Illuminates when the devices is powered on power input
- 2 Bluetooth Status Indicator - Illuminates when Bluetooth device is connected
- 3 ID LED Indicator - Flashes when this device is identified through Dante® Configurator
- 4 Analogue Audio Input - 3.5mm stereo jack for unbalanced analogue audio input
- 5 Bluetooth Pair Button - Press to make device discoverable for Bluetooth pairing, press 2 to 3 times to change audio source selection
- 6 Analogue Audio Output - RCA L / R connector unbalanced analogue audio output
- 7 Dante® Network Connection (PoE) - RJ45 connection to connect to network switch
- 8 Power Port – Use 12V/1A DC adaptor (not included) when PoE is not available to power device



Front Panel



Rear Panel

Specifications

- Audio Input Connectors:** 1 x Analogue Left / Right audio (3.5mm stereo jack)
- Audio Output Connectors:** 2 x Analogue RCA (Left / Right)
- Network Connectors:** 1 x PoE Dante® Ethernet Connection (RJ45)
- Bluetooth:** Bluetooth V5.0 - SBC / MP3 / AAC / APT-X / APTX-LL / APTX-HD, 44.1K-48KHz 16 / 24Bit
- Configuration Switches:** 1 x Push button (connect / selection)
- Firmware Upgrade:** 1 x Micro-USB UART port
- Module Dimensions (W x H x D):** 74mm x 74mm x 50mm (without faceplate)
- Faceplate Dimensions (W x H x D):** 85mm x 85mm x 5mm
- Cut Out Dimensions (W x H x D):** 52mm x 55mm x 38mm
- Mounting Hole Spacing:** UK 60mm CTC, EU 60mm CTC
- Backbox Requirements:** UK single gang backbox / EU single gang backbox
- Shipping Weight:** 0.3kg
- Operating Temperature:** 32°F to 104°F (0°C to 40°C)
- Storage Temperature:** - 4°F to 140°F (- 20°C to 60°C)
- Power Supply:** Class 1 IEEE 802.3af POE PD or 12V/1A DC, 2-Pin Phoenix connector

Package Contents

- 1 x DA11ABL-WPW-EU
- 1 x Magnetic Faceplate
- 1 x Quick Reference Guide

Acknowledgements

Dante® is a registered trademark of Audinate Pty Ltd.

FCC NOTICE

This equipment has been tested and found to comply with the limits for a Class B digital device, pursuant to part 15 of the FCC Rules. These limits are designed to provide reasonable protection against harmful interference in a residential installation. This equipment generates, uses, and can radiate radio frequency energy and, if not installed and used in accordance with the instructions, may cause harmful interference to radio communications. However, there is no guarantee that interference will not occur in a particular installation. If this equipment does cause harmful interference to radio or television reception, which can be determined by turning the equipment off and on, the user is encouraged to try to correct the interference by one or more of the following measures:

- Reorient or relocate the receiving antenna.
- Increase the separation between the equipment and receiver.
- Connect the equipment into an outlet on a circuit different from that to which the receiver is connected.
- Consult the dealer or an experienced radio/TV technician for help.

CAUTION - changes or modifications not expressly approved by the party responsible for compliance could void the user’s authority to operate the equipment.

CANADA, INDUSTRY CANADA (IC) NOTICES

This Class B digital apparatus complies with Canadian ICES-003. Operation is subject to the following two conditions: (1) this device may not cause interference, and (2) this device must accept any interference, including interference that may cause undesired operation of the device.

CORRECT DISPOSAL OF THIS PRODUCT

This marking indicates that this product should not be disposed with other household wastes. To prevent possible harm to the environment or human health from uncontrolled waste disposal, recycle it responsibly to promote the sustainable reuse of material resources. To return your used device, please use the return and collection systems or contact the retailer where the product was purchased. They can take this product for environmentally safe recycling.